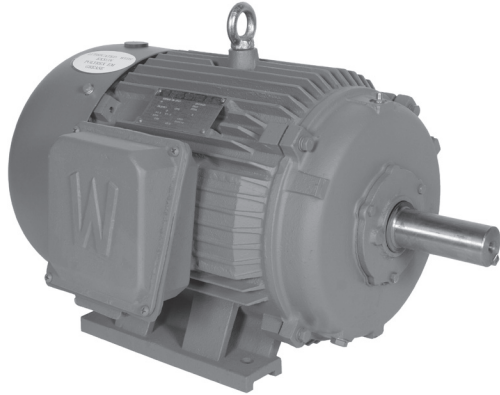


WORLDWIDE GENERAL PURPOSE MOTORS PREMIUM EFFICIENCY / HIGH EFFICIENCY

TEFC Enclosure ▪ Rigid Base

Three-Phase ▪ 208-230/460 and 460 Volt



Product Overview

- 1-600 HP
- 3600, 1800, 1200 and 900 RPM
- 208-230/460 volt (1-200 HP)
- 460 volt (250-600 HP)
- TEFC enclosure
- 1.15 service factor
- Class F insulation
- Rigid base
- Premium efficiency (1-200 HP, 3600, 1800 and 1200 RPM)
- High efficiency (1-300 HP, 900 RPM and 250-600 HP)
- Inverter ready, 4:1 CT / 10:1 VT (1-200 HP, 3600, 1800 and 1200 RPM)
- Inverter ready, 2:1 CT / 5:1 VT (1-200 HP, 900 RPM and 250-600 HP)
- Suitable for 50 hz operation with 1.0 service factor (1-150 HP)
- Please consult WorldWide Electric for 200 HP and above
- Dimensions on page 91-92

WORLDWIDE
GENERAL PURPOSE

HP	RPM	Voltage	Frame	Model Number	FL Amps (A)	FL Eff. (%)	Approx. Wt. (lbs.)	Notes
1	1800	208-230/460	143T	PEWWE1-18-143T	1.6	85.5	53	
	1200	208-230/460	145T	PEWWE1-12-145T	1.8	82.5	60	
	3600	208-230/460	143T	PEWWE1.5-36-143T	2.1	84.0	49	
1.5	1800	208-230/460	145T	PEWWE1.5-18-145T	2.3	86.5	62	
	1200	208-230/460	182T	PEWWE1.5-12-182T	2.4	87.5	100	
	3600	208-230/460	145T	PEWWE2-36-145T	2.6	85.5	58	
2	1800	208-230/460	145T	PEWWE2-18-145T	3.0	86.5	67	
	1200	208-230/460	184T	PEWWE2-12-184T	3.1	88.5	101	
	3600	208-230/460	182T	PEWWE3-36-182T	3.7	86.5	98	
3	1800	208-230/460	182T	PEWWE3-18-182T	4.0	89.5	119	
	1200	208-230/460	213T	PEWWE3-12-213T	4.4	89.5	168	
	900	208-230/460	215T	WWE3-9-215T	5.0	84.0	143	
5	3600	208-230/460	184T	PEWWE5-36-184T	6.0	88.5	106	
	1800	208-230/460	184T	PEWWE5-18-184T	6.5	89.5	125	
	1200	208-230/460	215T	PEWWE5-12-215T	7.2	89.5	187	
7.5	900	208-230/460	254T	WWE5-9-254T	7.6	85.5	240	
	3600	208-230/460	213T	PEWWE7.5-36-213T	8.6	89.5	168	
	1800	208-230/460	213T	PEWWE7.5-18-213T	9.3	91.7	181	
10	1200	208-230/460	254T	PEWWE7.5-12-254T	10.4	91.0	265	
	900	208-230/460	256T	WWE7.5-9-256T	11.2	85.5	280	
	3600	208-230/460	215T	PEWWE10-36-215T	11.6	90.2	185	
15	1800	208-230/460	215T	PEWWE10-18-215T	12.4	91.7	205	
	1200	208-230/460	256T	PEWWE10-12-256T	14.2	91.0	302	
	900	208-230/460	284T	WWE10-9-284T	14.2	88.5	395	
20	3600	208-230/460	254T	PEWWE15-36-254T	17.2	91.0	276	
	1800	208-230/460	254T	PEWWE15-18-254T	18.2	92.4	311	
	1200	208-230/460	284T	PEWWE15-12-284T	18.8	91.7	397	
	900	208-230/460	286T	WWE15-9-286T	20.5	88.5	390	

R Roller bearing on drive end for belted applications

When using any motor with a variable frequency drive, take precautions to eliminate or reduce shaft currents in order to prolong bearing life.

Continued On Next Page



WORLDWIDE GENERAL PURPOSE MOTORS PREMIUM EFFICIENCY / HIGH EFFICIENCY

TEFC Enclosure ▪ Rigid Base

Three-Phase ▪ 208-230/460 and 460 Volt



WORLDWIDE
GENERAL PURPOSE

HP	RPM	Voltage	Frame	Model Number	FL Amps (A)	FL Eff. (%)	Approx. Wt. (lbs.)	Notes
20	3600	208-230/460	256T	PEWWE20-36-256T	23.2	91.0	306	
	1800	208-230/460	256T	PEWWE20-18-256T	24.1	93.0	390	
	1200	208-230/460	286T	PEWWE20-12-286T	25.0	91.7	463	
	900	208-230/460	324T	WWE20-9-324T	27.3	89.5	529	
25	3600	208-230/460	284T	PEWWE25-36-284T	28.8	91.7	397	
	3600	208-230/460	284TS	PEWWE25-36-284TS	28.8	91.7	397	
	1800	208-230/460	284T	PEWWE25-18-284T	29.2	93.6	410	
	1200	208-230/460	324T	PEWWE25-12-324T	33.7	93.0	595	
	900	208-230/460	326T	WWE25-9-326T	33.3	89.5	562	
30	3600	208-230/460	286T	PEWWE30-36-286T	34.2	91.7	430	
	3600	208-230/460	286TS	PEWWE30-36-286TS	34.2	91.7	430	
	1800	208-230/460	286T	PEWWE30-18-286T	34.7	93.6	450	
	1200	208-230/460	326T	PEWWE30-12-326T	38.6	93.0	606	
	900	208-230/460	364T	WWE30-9-364T	38.9	91.0	694	
40	3600	208-230/460	324T	PEWWE40-36-324T	46.3	92.4	518	
	3600	208-230/460	324TS	PEWWE40-36-324TS	46.3	92.4	518	
	1800	208-230/460	324T	PEWWE40-18-324T	46.5	94.1	617	
	1200	208-230/460	364T	PEWWE40-12-364T	50.7	94.1	816	
	900	208-230/460	365T	WWE40-9-365T	52.4	91.0	754	
50	3600	208-230/460	326T	PEWWE50-36-326T	56.7	93.0	562	
	3600	208-230/460	326TS	PEWWE50-36-326TS	56.7	93.0	562	
	1800	208-230/460	326T	PEWWE50-18-326T	57.1	94.5	675	
	1200	208-230/460	365T	PEWWE50-12-365T	62.5	94.1	915	
	900	208-230/460	404T	WWE50-9-404T	65.0	91.7	1033	R
60	3600	208-230/460	364T	PEWWE60-36-364T	68.6	93.6	728	
	3600	208-230/460	364TS	PEWWE60-36-364TS	68.6	93.6	728	
	1800	208-230/460	364T	PEWWE60-18-364T	69.9	95.0	827	
	1200	208-230/460	404T	PEWWE60-12-404T	70.3	94.5	1069	R
	900	208-230/460	405T	WWE60-9-405T	80.0	91.7	1183	R
75	3600	208-230/460	365T	PEWWE75-36-365T	83.8	93.6	772	
	3600	208-230/460	365TS	PEWWE75-36-365TS	83.8	93.6	772	
	1800	208-230/460	365T	PEWWE75-18-365T	84.1	95.4	904	
	1200	208-230/460	405T	PEWWE75-12-405T	85.9	94.5	1158	R
	900	208-230/460	444T	WWE75-9-444T	95.0	93.0	1378	R
100	3600	208-230/460	405TS	PEWWE100-36-405TS	112	94.1	1103	
	1800	208-230/460	405T	PEWWE100-18-405T	113	95.4	1213	R
	1800	208-230/460	405T	PEWWE100-18-405TBB	113	95.4	1213	
	1200	208-230/460	444T	PEWWE100-12-444T	121	95.0	1455	R
	900	208-230/460	445T	WWE100-9-445T	131	93.0	1473	R
125	3600	208-230/460	444TS	PEWWE125-36-444TS	132	95.0	1455	
	1800	208-230/460	444T	PEWWE125-18-444T	137	95.4	1455	R
	1800	208-230/460	444T	PEWWE125-18-444TBB	137	95.4	1455	
	1200	208-230/460	445T	PEWWE125-12-445T	145	95.0	1632	R
	900	208-230/460	445/7T	WWE125-9-445/7T	154	93.6	1798	R
150	3600	208-230/460	445TS	PEWWE150-36-445TS	161	95.0	1654	
	1800	208-230/460	445T	PEWWE150-18-445T	168	95.8	1632	R
	1800	208-230/460	445T	PEWWE150-18-445TBB	168	95.8	1632	
	1200	208-230/460	445/7T	PEWWE150-12-445/7T	176	95.8	2051	R
	900	460	449T	WWE150-9-449T	186	94.5	2520	R

R Roller bearing on drive end for belted applications

When using any motor with a variable frequency drive, take precautions to eliminate or reduce shaft currents in order to prolong bearing life.

Continued On Next Page



WORLDWIDE GENERAL PURPOSE MOTORS PREMIUM EFFICIENCY / HIGH EFFICIENCY

TEFC Enclosure ▪ Rigid Base

Three-Phase ▪ 208-230/460 and 460 Volt



HP	RPM	Voltage	Frame	Model Number	FL Amps (A)	FL Eff. (%)	Approx. Wt. (lbs.)	Notes
200	3600	208-230/460	445/7TS	PEWWE200-36-445/7TS	217.0	95.4	2051	
	1800	208-230/460	445/7T	PEWWE200-18-445/7T	228.0	96.2	2051	R
	1800	208-230/460	445/7T	PEWWE200-18-445/7TB	228.0	96.2	2051	
	1200	460	449T	PEWWE200-12-449T	234.0	95.8	2508	R
	900	460	449T	WWE200-9-449T	250	94.3	2900	R
250	3600	460	449TS	WWE250-36-449TS	272	95.0	2305	
	1800	460	449T	WWE250-18-449T	282	95.0	2508	R
	1800	460	449T	WWE250-18-449TB	282	95.0	2508	
	1800	460	505Z	WWE250-18-505Z	276	94.8	2359	R
	1800	460	505UZ	WWE250-18-505UZ	276	94.8	2359	R
	1200	460	449T	WWE250-12-449T	300	95.4	2750	R
	1200	460	449T	WWE250-12-449TB	300	95.4	2750	
	1200	460	586/7	WWE250-12-586/7	289	94.5	3696	R
	1200	460	586/7UZ	WWE250-12-586/7UZ	289	94.5	3696	R
	900	460	586/7	WWE250-9-586/7	309	94.4	4030	R
300	1800	460	449T	WWE300-18-449T	334	95.7	2728	R
	1800	460	449T	WWE300-18-449TB	334	95.7	2728	
	1800	460	586/7	WWE300-18-586/7	323	95.0	3784	R
	1800	460	586/7	WWE300-18-586/7BB	323	95.0	3784	
	1800	460	586/7UZ	WWE300-18-586/7UZ	323	95.0	3784	R
	1200	460	449T	WWE300-12-449T	355	94.5	2830	R
	1200	460	449T	WWE300-12-449TB	355	94.5	2830	
	1200	460	586/7	WWE300-12-586/7	337	95.2	4136	R
	1200	460	586/7UZ	WWE300-12-586/7UZ	337	95.2	4136	R
	900	460	586/7	WWE300-9-586/7	364	94.9	4440	R
900	460	586/7UZ	WWE300-9-586/7UZ	364	94.9	4440	R	
350	1800	460	586/7	WWE350-18-586/7	378	95.8	3960	R
	1800	460	586/7	WWE350-18-586/7BB	378	95.8	3960	
	1800	460	586/7UZ	WWE350-18-586/7UZ	378	95.8	3960	R
	1200	460	449T	WWE350-12-449T	411	95.0	2850	R
	1200	460	586/7	WWE350-12-586/7	390	95.1	4145	R
	1200	460	586/7	WWE350-12-586/7BB	390	95.1	4145	
	1200	460	586/7UZ	WWE350-12-586/7UZ	390	95.1	4145	R
400	1800	460	586/7	WWE400-18-586/7	430	95.3	4101	R
	1800	460	586/7	WWE400-18-586/7BB	430	95.3	4101	
	1800	460	586/7UZ	WWE400-18-586/7UZ	430	95.3	4101	R
	1200	460	586/7	WWE400-12-586/7	448	95.0	4409	R
	1200	460	586/7	WWE400-12-586/7BB	448	95.0	4409	
	1200	460	586/7UZ	WWE400-12-586/7UZ	448	95.0	4409	R
450	1800	460	586/7	WWE450-18-586/7	478	96.1	4500	R
	1200	460	586/7	WWE450-12-586/7	501	95.8	4500	R ▲
500	1800	460	586/7	WWE500-18-586/7	539	95.8	4630	R
	1800	460	586/7	WWE500-18-586/7BB	539	95.8	4630	
	1800	460	586/7UZ	WWE500-18-586/7UZ	539	95.8	4630	R
	1200	460	586/7	WWE500-12-586/7	557	95.0	4740	R ▲
	1200	460	586/7UZ	WWE500-12-586/7UZ	557	95.0	4740	R ▲
600	1800	460	586/7	WWE600-18-586/7	661	95.0	4630	R ▲

WORLDWIDE
GENERAL PURPOSE

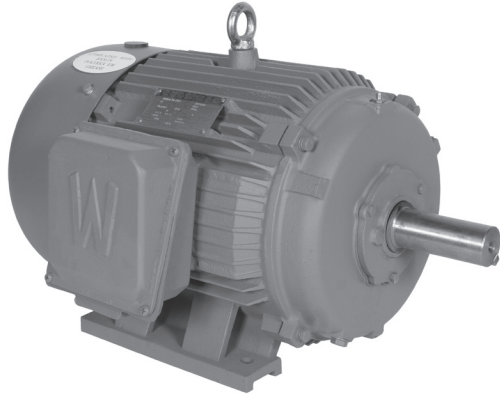
R Roller bearing on drive end for belted applications
▲ 1.0 service factor

When using any motor with a variable frequency drive, take precautions to eliminate or reduce shaft currents in order to prolong bearing life.



WORLDWIDE GENERAL PURPOSE MOTORS PREMIUM EFFICIENCY / HIGH EFFICIENCY

TEFC Enclosure ▪ Rigid Base ▪ Factory Short Shaft
Three-Phase ▪ 208-230/460 and 460 Volt



Product Overview

- 25-300 HP
- 1800 and 1200 RPM
- 208-230/460 volt (25-200 HP)
- 460 volt (250-300 HP)
- TEFC enclosure
- 1.15 service factor
- Class F insulation
- Rigid base
- Factory short shaft
- Premium efficiency (25-200 HP)
- High efficiency (250-300 HP)
- Inverter ready, 4:1 CT / 10:1 VT (25-200 HP)
- Inverter ready, 2:1 CT / 5:1 VT (250-300 HP)
- Suitable for 50 hz operation with 1.0 service factor (1-150 HP)
Please consult WorldWide Electric for 200 HP and above
- Dimensions on page 91-92

HP	RPM	Voltage	Frame	Model Number	FL Amps (A)	FL Eff. (%)	Approx. Wt. (lbs.)	Notes
25	1800	208-230/460	284TS	PEWWE25-18-284TS	29.2	93.6	410	
30	1800	208-230/460	286TS	PEWWE30-18-286TS	34.7	93.6	450	
40	1800	208-230/460	324TS	PEWWE40-18-324TS	46.5	94.1	617	
50	1800	208-230/460	326TS	PEWWE50-18-326TS	57.1	94.5	675	
60	1800	208-230/460	364TS	PEWWE60-18-364TS	69.9	95.0	827	
75	1800	208-230/460	365TS	PEWWE75-18-365TS	84.1	95.4	904	
100	1800	208-230/460	405TS	PEWWE100-18-405TSBB	113	95.4	1213	
	1200	208-230/460	444TS	PEWWE100-12-444TSBB	121	95.0	1455	
125	1800	208-230/460	444TS	PEWWE125-18-444TSBB	137	95.4	1455	
	1200	208-230/460	445TS	PEWWE125-12-445TSBB	145	95.0	1632	
150	1800	208-230/460	445TS	PEWWE150-18-445TSBB	168	95.8	1632	
	1200	208-230/460	445/7TS	PEWWE150-12-445/7TSBB	176	95.8	2051	
200	1800	208-230/460	445/7TS	PEWWE200-18-445/7TSBB	228	96.2	2051	
	1200	460	449TS	PEWWE200-12-449TSBB	234	95.8	2508	
250	1800	460	449TS	WWE250-18-449TSBB	282	95.0	2508	
	1200	460	449TS	WWE250-12-449TSBB	300	95.4	2750	
300	1800	460	449TS	WWE300-18-449TSBB	334	95.7	2728	
	1200	460	449TS	WWE300-12-449TSBB	355	94.5	2830	

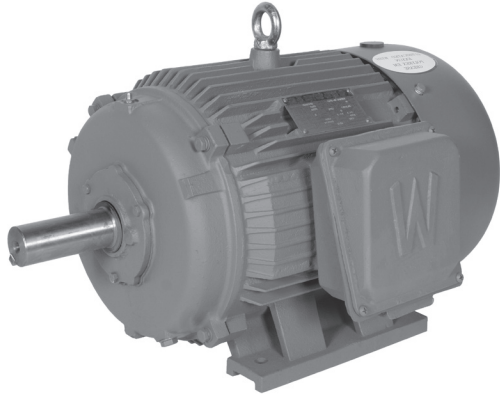
R Roller bearing on drive end for belted applications

When using any motor with a variable frequency drive, take precautions to eliminate or reduce shaft currents in order to prolong bearing life.



WORLDWIDE GENERAL PURPOSE MOTORS PREMIUM EFFICIENCY / HIGH EFFICIENCY

TEFC Enclosure ▪ Rigid Base ▪ Factory F2 Mount
Three-Phase ▪ 208-230/460 and 460 Volt



Product Overview

- 25-500 HP
- 1800 and 1200 RPM
- 208-230/460 volt (25-200 HP)
- 460 volt (250-500 HP)
- TEFC enclosure
- 1.15 service factor
- Class F insulation
- Rigid base
- Factory F2 mount
- Premium efficiency (25-200 HP)
- High efficiency (250-500 HP)
- Inverter ready, 4:1 CT / 10:1 VT (25-200 HP)
- Inverter ready, 2:1 CT / 5:1 VT (250-500 HP)
- Suitable for 50 hz operation with 1.0 service factor (25-150 HP)
Please consult WorldWide Electric for 200 HP and above
- Dimensions on page 91-92

WORLDWIDE
GENERAL PURPOSE

HP	RPM	Voltage	Frame	Model Number	FL Amps (A)	FL Eff. (%)	Approx. Wt. (lbs.)	Notes
25	1800	208-230/460	284T	PEWWE25-18-284T-F2	29.2	93.6	410	
30	1800	208-230/460	286T	PEWWE30-18-286T-F2	34.7	93.6	450	
40	1800	208-230/460	324T	PEWWE40-18-324T-F2	46.5	94.1	617	
50	1800	208-230/460	326T	PEWWE50-18-326T-F2	57.1	94.5	675	
60	1800	208-230/460	364T	PEWWE60-18-364T-F2	69.9	95.0	827	
75	1800	208-230/460	365T	PEWWE75-18-365T-F2	84.1	95.4	904	
	1200	208-230/460	405T	PEWWE75-12-405T-F2	85.9	94.5	1158	R
100	1800	208-230/460	405T	PEWWE100-18-405T-F2	113	95.4	1213	R
	1200	208-230/460	444T	PEWWE100-12-444T-F2	121	95.0	1455	R
125	1800	208-230/460	444T	PEWWE125-18-444T-F2	137	95.4	1455	R
	1200	208-230/460	445T	PEWWE125-12-445T-F2	145	95.0	1632	R
150	1800	208-230/460	445T	PEWWE150-18-445T-F2	168	95.8	1632	R
	1200	208-230/460	445/7T	PEWWE150-12-445/7T-F2	176	95.8	2051	R
200	1800	208-230/460	445/7T	PEWWE200-18-445/7T-F2	228	96.2	2051	R
	1200	460	449T	PEWWE200-12-449T-F2	234	95.8	2508	R
250	1800	460	449T	WWE250-18-449T-F2	282	95.0	2508	R
	1200	460	449T	WWE250-12-449T-F2	300	95.4	2750	R
300	1800	460	449T	WWE300-18-449T-F2	334	95.7	2728	R
	1200	460	449T	WWE300-12-449T-F2	355	94.5	2830	R
350	1800	460	586/7	WWE350-18-586/7-F2	378	95.8	3960	R
	1200	460	586/7	WWE350-12-586/7-F2	390	95.1	4145	R
400	1800	460	586/7	WWE400-18-586/7-F2	430	95.3	4101	R
	1200	460	586/7	WWE400-12-586/7-F2	448	95	4409	R
500	1800	460	586/7	WWE500-18-586/7-F2	539	95.8	4630	R
	1200	460	586/7	WWE500-12-586/7-F2	557	95	4740	R ▲

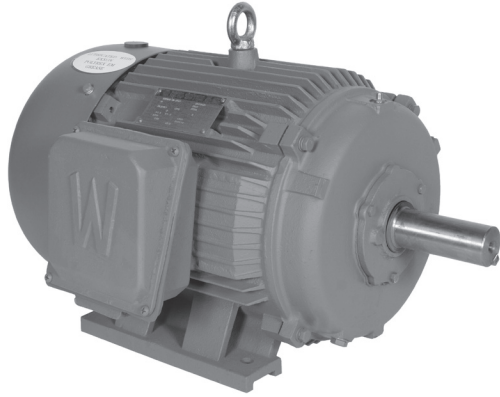
R Roller bearing on drive end for belted applications
▲ 1.0 service factor

When using any motor with a variable frequency drive, take precautions to eliminate or reduce shaft currents in order to prolong bearing life.



WORLDWIDE GENERAL PURPOSE MOTORS PREMIUM EFFICIENCY / HIGH EFFICIENCY

TEFC Enclosure ▪ Rigid Base ▪ Part-Winding Start (PWS)
Three-Phase ▪ 460 Volt



Product Overview

- 100-300 HP
- 1800 RPM
- 460 volt
- TEFC enclosure
- 1.15 service factor
- Class F insulation
- Rigid base
- Part-winding start (PWS)
- Premium efficiency (100-200 HP)
- High efficiency (250-300 HP)
- Inverter ready, 4:1 CT / 10:1 VT (100-200 HP)
- Inverter ready, 2:1 CT / 5:1 VT (250-300 HP)
- Suitable for 50 hz operation with 1.0 service factor (100-150 HP)
- Please consult WorldWide Electric for 200 HP and above
- Dimensions on page 91-92

HP	RPM	Voltage	Frame	Model Number	FL Amps (A)	FL Eff. (%)	Approx. Wt. (lbs.)	Notes
100	1800	460	405T	PEWWE100-18-460-PWS-405T	113	95.4	1213	R
	1800	460	405T	PEWWE100-18-460-PWS-405TBB	113	95.4	1213	
125	1800	460	444T	PEWWE125-18-460-PWS-444T	137	95.4	1455	R
	1800	460	444T	PEWWE125-18-460-PWS-444TBB	137	95.4	1455	
150	1800	460	444/5T	PEWWE150-18-460-PWS-444/5T	168	95.8	1632	R
	1800	460	444/5T	PEWWE150-18-460-PWS-444/5TBB	168	95.8	1632	
200	1800	460	445/7T	PEWWE200-18-460-PWS-445/7T	228	96.2	2051	R
	1800	460	445/7T	PEWWE200-18-460-PWS-445/7TBB	228	96.2	2051	
250	1800	460	449T	WWE250-18-460-PWS-449T	282	95.0	2508	R
	1800	460	449T	WWE300-18-460-PWS-449T	334	95.7	2728	R

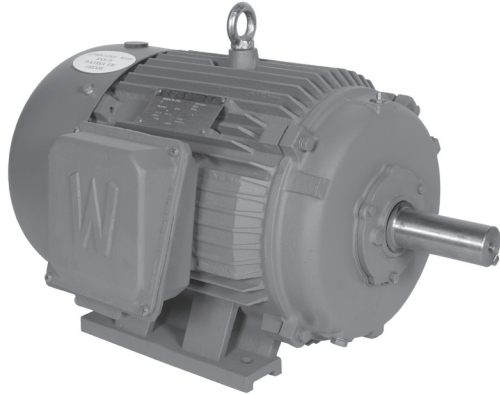
R Roller bearing on drive end for belted applications

When using any motor with a variable frequency drive, take precautions to eliminate or reduce shaft currents in order to prolong bearing life.



WORLDWIDE GENERAL PURPOSE MOTORS PREMIUM EFFICIENCY / HIGH EFFICIENCY

TEFC Enclosure ▪ Rigid Base
Three-Phase ▪ 575 Volt



Product Overview

- 1-500 HP
- 3600, 1800 and 1200 RPM
- 575 volt
- TEFC enclosure
- 1.15 service factor
- Class F insulation
- Rigid base
- Premium efficiency (1-200 HP)
- High efficiency (250-500 HP)
- Inverter ready, 4:1 CT / 10:1 VT (1-200 HP)
- Inverter ready, 2:1 CT / 5:1 VT (250-500 HP)
- Please consult WorldWide Electric for 200 HP and above
- Dimensions on page 91-92

WORLDWIDE
GENERAL PURPOSE

HP	RPM	Voltage	Frame	Model Number	FL Amps (A)	FL Eff. (%)	Approx. Wt. (lbs.)	Notes
1	1800	575	143T	PEWWE1-18-575-143T	1.3	85.5	53	
	1200	575	145T	PEWWE1-12-575-145T	1.4	82.5	60	
	3600	575	143T	PEWWE1.5-36-575-143T	1.6	84.0	49	
1.5	1800	575	145T	PEWWE1.5-18-575-145T	1.8	86.5	62	
	1200	575	182T	PEWWE1.5-12-575-182T	1.9	87.5	100	
	3600	575	145T	PEWWE2-36-575-145T	2.1	85.5	58	
2	1800	575	145T	PEWWE2-18-575-145T	2.4	86.5	67	
	1200	575	184T	PEWWE2-12-575-184T	2.4	88.5	130	
	3600	575	182T	PEWWE3-36-575-182T	3.0	86.5	78	
3	1800	575	182T	PEWWE3-18-575-182T	3.2	89.5	119	
	1200	575	213T	PEWWE3-12-575-213T	3.5	89.5	168	
	3600	575	184T	PEWWE5-36-575-184T	4.8	88.5	106	
5	1800	575	184T	PEWWE5-18-575-184T	5.2	89.5	125	
	1200	575	215T	PEWWE5-12-575-215T	5.7	89.5	187	
	3600	575	213T	PEWWE7.5-36-575-213T	6.9	89.5	168	
7.5	1800	575	213T	PEWWE7.5-18-575-213T	7.4	91.7	181	
	1200	575	254T	PEWWE7.5-12-575-254T	8.3	91.0	265	
	3600	575	215T	PEWWE10-36-575-215T	9.3	90.2	185	
10	1800	575	215T	PEWWE10-18-575-215T	9.9	91.7	205	
	1200	575	256T	PEWWE10-12-575-256T	11.4	91.0	302	
	3600	575	254T	PEWWE15-36-575-254T	13.8	91.0	276	
15	1800	575	254T	PEWWE15-18-575-254T	14.6	92.4	311	
	1200	575	284T	PEWWE15-12-575-284T	15.0	91.7	397	
	3600	575	256T	PEWWE20-36-575-256T	18.6	91.0	306	
20	1800	575	256T	PEWWE20-18-575-256T	19.3	93.0	390	
	1200	575	286T	PEWWE20-12-575-286T	20.0	91.7	463	
	3600	575	284TS	PEWWE25-36-575-284TS	23.0	91.7	397	
25	1800	575	284T	PEWWE25-18-575-284T	23.4	93.6	410	
	1200	575	324T	PEWWE25-12-575-324T	27.0	93.0	595	

R Roller bearing on drive end for belted applications

When using any motor with a variable frequency drive, take precautions to eliminate or reduce shaft currents in order to prolong bearing life.

Continued On Next Page



WORLDWIDE GENERAL PURPOSE MOTORS PREMIUM EFFICIENCY / HIGH EFFICIENCY

TEFC Enclosure ▪ Rigid Base

Three-Phase ▪ 575 Volt



WORLDWIDE
GENERAL PURPOSE

HP	RPM	Voltage	Frame	Model Number	FL Amps (A)	FL Eff. (%)	Approx. Wt. (lbs.)	Notes
30	3600	575	286TS	PEWWE30-36-575-286TS	27.8	91.7	430	
	1800	575	286T	PEWWE30-18-575-286T	27.8	93.6	461	
	1200	575	326T	PEWWE30-12-575-326T	30.9	93.0	606	
40	3600	575	324TS	PEWWE40-36-575-324TS	37.0	92.4	518	
	1800	575	324T	PEWWE40-18-575-324T	37.2	94.1	617	
	1200	575	364T	PEWWE40-12-575-364T	40.6	94.1	816	
50	3600	575	326TS	PEWWE50-36-575-326TS	45.4	93.0	562	
	1800	575	326T	PEWWE50-18-575-326T	45.7	94.5	675	
	1200	575	365T	PEWWE50-12-575-365T	50.0	94.1	915	
60	3600	575	364TS	PEWWE60-36-575-364TS	54.9	93.6	728	
	1800	575	364T	PEWWE60-18-575-364T	55.9	95.0	827	
	1200	575	404T	PEWWE60-12-575-404T	56.2	94.5	1069	R
75	3600	575	365TS	PEWWE75-36-575-365TS	67.0	93.6	772	
	1800	575	365T	PEWWE75-18-575-365T	67.3	95.4	904	
	1200	575	405T	PEWWE75-12-575-405T	68.8	94.5	1158	R
100	3600	575	405TS	PEWWE100-36-575-405TS	89.6	94.1	1103	
	1800	575	405T	PEWWE100-18-575-405T	90.4	95.4	1213	R
	1200	575	444T	PEWWE100-12-575-444T	96.8	95.0	1462	R
125	3600	575	444TS	PEWWE125-36-575-444TS	106	95.0	1455	
	1800	575	444T	PEWWE125-18-575-444T	110	95.4	1470	R
	1200	575	445T	PEWWE125-12-575-445T	116	95.0	1632	R
150	3600	575	445TS	PEWWE150-36-575-445TS	129	95.0	1654	
	1800	575	445T	PEWWE150-18-575-445T	134	95.8	1640	R
	1800	575	445T	PEWWE150-18-575-445TBB	134	95.8	1640	
	1200	575	445/7T	PEWWE150-12-575-445/7T	141	95.8	2051	R
	900	575	449T	WWE150-9-575-449T	150	94.5	2520	R
200	3600	575	445/7TS	PEWWE200-36-575-445/7TS	174	95.4	2051	
	1800	575	445/7T	PEWWE200-18-575-445/7T	182	96.2	2075	R
	1200	575	449T	PEWWE200-12-575-449T	234	95.8	2508	R
250	1800	575	449T	WWE250-18-575-449T	225	95.1	2508	R
	1200	575	449T	WWE250-12-575-449T	244	95.0	2750	R
	1200	575	586/7	WWE250-12-575-586/7	231	94.5	3696	R
300	1800	575	586/7	WWE300-18-575-586/7	257	95.0	3784	R
	1200	575	449T	WWE300-12-575-449T	285	94.5	2830	R
	900	575	586/7	WWE300-9-575-586/7	294	94.9	4440	R
400	1800	575	586/7	WWE400-18-575-586/7	344	95.1	4101	R
500	1200	575	586/7	WWE500-12-575-586/7	451	95.2	4740	R ▲

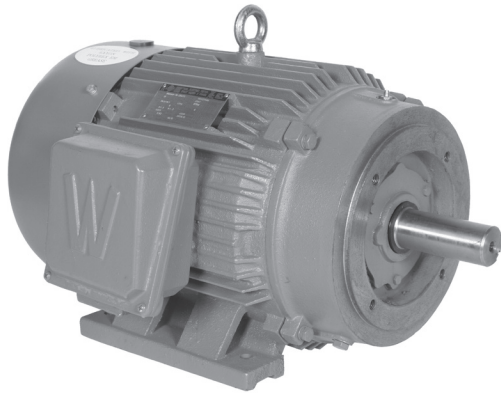
R Roller bearing on drive end for belted applications
▲ 1.0 service factor

When using any motor with a variable frequency drive, take precautions to eliminate or reduce shaft currents in order to prolong bearing life.



WORLDWIDE GENERAL PURPOSE MOTORS PREMIUM EFFICIENCY / HIGH EFFICIENCY

TEFC Enclosure ▪ C-Face ▪ Rigid Base
Three-Phase ▪ 208-230/460 and 460 Volt



Product Overview

- 1-300 HP
- 3600, 1800 and 1200 RPM
- 208-230/460 volt (1-200 HP)
- 460 volt (250-300 HP)
- TEFC enclosure
- 1.15 service factor
- Class F insulation
- C-face - rigid base
- Premium efficiency (1-200 HP)
- High efficiency (250-300 HP)
- Inverter ready, 4:1 CT / 10:1 VT (1-200 HP)
- Inverter ready, 2:1 CT / 5:1 VT (250-300 HP)
- Suitable for 50 hz operation with 1.0 service factor (1-150 HP)
- Please consult WorldWide Electric for 200 HP and above
- Dimensions on page 93-94

WORLDWIDE
GENERAL PURPOSE

HP	RPM	Voltage	Frame	Model Number	FL Amps (A)	FL Eff. (%)	Approx. Wt. (lbs.)	Notes
1	1800	208-230/460	143TC	PEWWE1-18-143TC	1.6	85.5	53	
	1200	208-230/460	145TC	PEWWE1-12-145TC	1.8	82.5	60	
1.5	3600	208-230/460	143TC	PEWWE1.5-36-143TC	2.1	84.0	49	
	1800	208-230/460	145TC	PEWWE1.5-18-145TC	2.3	86.5	62	
2	3600	208-230/460	145TC	PEWWE2-36-145TC	2.6	85.5	58	
	1800	208-230/460	145TC	PEWWE2-18-145TC	3.0	86.5	67	
3	3600	208-230/460	182TC	PEWWE3-36-182TC	3.7	86.5	98	
	1800	208-230/460	182TC	PEWWE3-18-182TC	4.0	89.5	119	
	1200	208-230/460	213TC	PEWWE3-12-213TC	4.4	89.5	168	
5	3600	208-230/460	184TC	PEWWE5-36-184TC	6.0	88.5	106	
	1800	208-230/460	184TC	PEWWE5-18-184TC	6.5	89.5	125	
	1200	208-230/460	215TC	PEWWE5-12-215TC	7.2	89.5	187	
7.5	3600	208-230/460	184TC	PEWWE7.5-36-184TC	8.6	89.5	168	
	3600	208-230/460	213TC	PEWWE7.5-36-213TC	9.3	91.7	181	
	1800	208-230/460	213TC	PEWWE7.5-18-213TC	10.4	91.0	265	
10	3600	208-230/460	254TC	PEWWE7.5-12-254TC	11.6	90.2	185	
	1800	208-230/460	215TC	PEWWE10-36-215TC	12.4	91.7	205	
	1200	208-230/460	215TC	PEWWE10-18-215TC	14.2	91.0	302	
15	3600	208-230/460	256TC	PEWWE10-12-256TC	17.2	91.0	276	
	3600	208-230/460	215TC	PEWWE15-36-215TC	18.2	92.4	311	
	3600	208-230/460	254TC	PEWWE15-36-254TC	18.8	91.7	397	
20	1800	208-230/460	254TC	PEWWE15-18-254TC	23.2	91.0	306	
	3600	208-230/460	256TC	PEWWE20-36-256TC	24.1	93.0	390	
	1800	208-230/460	256TC	PEWWE20-18-256TC	25.0	91.7	463	
25	1200	208-230/460	286TC	PEWWE20-12-286TC	28.8	91.7	397	
	3600	208-230/460	284TSC	PEWWE25-36-284TSC	29.2	93.6	410	
	1800	208-230/460	284TC	PEWWE25-18-284TC	29.2	93.6	410	
	1800	208-230/460	284TSC	PEWWE25-18-284TSC	33.7	93.0	595	
	1200	208-230/460	324TC	PEWWE25-12-324TC				

R Roller bearing on drive end for belted applications

When using any motor with a variable frequency drive, take precautions to eliminate or reduce shaft currents in order to prolong bearing life.

Continued On Next Page



WORLDWIDE GENERAL PURPOSE MOTORS PREMIUM EFFICIENCY / HIGH EFFICIENCY

TEFC Enclosure ▪ C-Face ▪ Rigid Base

Three-Phase ▪ 208-230/460 and 460 Volt



WORLDWIDE
GENERAL PURPOSE

HP	RPM	Voltage	Frame	Model Number	FL Amps (A)	FL Eff. (%)	Approx. Wt. (lbs.)	Notes
30	3600	208-230/460	286TSC	PEWWE30-36-286TSC	34.2	91.7	430	
	1800	208-230/460	286TC	PEWWE30-18-286TC	34.7	93.6	450	
	1200	208-230/460	326TC	PEWWE30-12-326TC	38.6	93.0	606	
40	1800	208-230/460	324TC	PEWWE40-18-324TC	46.5	94.1	617	
	1200	208-230/460	364TC	PEWWE40-12-364TC	50.7	94.1	816	
50	1800	208-230/460	326TC	PEWWE50-18-326TC	57.1	94.5	675	
	1200	208-230/460	365TC	PEWWE50-12-365TC	62.5	94.1	915	
60	1800	208-230/460	364TC	PEWWE60-18-364TC	69.9	95.0	827	
	1200	208-230/460	404TC	PEWWE60-12-404TC	70.3	94.5	1069	
75	3600	208-230/460	365TSC	PEWWE75-36-365TSC	83.8	93.6	772	
	1800	208-230/460	365TC	PEWWE75-18-365TC	84.1	95.4	904	
	1800	208-230/460	365TSC	PEWWE75-18-365TSC	84.1	95.4	904	
	1200	208-230/460	405TC	PEWWE75-12-405TC	85.9	94.5	1158	
100	3600	208-230/460	405TSC	PEWWE100-36-405TSC	112	94.1	1103	
	1800	208-230/460	405TC	PEWWE100-18-405TC	113	95.4	1213	
	1800	208-230/460	405TSC	PEWWE100-18-405TSC	113	95.4	1213	
	1200	208-230/460	444TC	PEWWE100-12-444TC	121	95.0	1455	
125	3600	208-230/460	444TSC	PEWWE125-36-444TSC	132	95.0	1455	
	1800	208-230/460	444TC	PEWWE125-18-444TC	137	95.4	1455	
	1800	208-230/460	444TSC	PEWWE125-18-444TSC	137	95.4	1455	
	1200	208-230/460	445TC	PEWWE125-12-445TC	145	95.0	1632	
150	3600	208-230/460	445TSC	PEWWE150-36-445TSC	161	95.0	1654	
	1800	208-230/460	445TC	PEWWE150-18-445TC	168	95.8	1632	
	1800	208-230/460	445TSC	PEWWE150-18-445TSC	168	95.8	1632	
	1200	208-230/460	445/7TC	PEWWE150-12-445/7TC	176	95.8	2051	
200	1800	208-230/460	445/7TC	PEWWE200-18-445/7TC	228	96.2	2051	
	1800	208-230/460	445/7TSC	PEWWE200-18-445/7TSC	228	96.2	2051	
	1200	460	449TC	PEWWE200-12-449TC	234	95.8	2508	
250	1800	460	449TC	WWE250-18-449TC	282	95.0	2508	
	1800	460	449TSC	WWE250-18-449TSC	282	95.0	2508	
	1200	460	449TC	WWE250-12-449TC	300	95.4	2750	
300	1800	460	449TC	WWE300-18-449TC	334	95.7	2728	

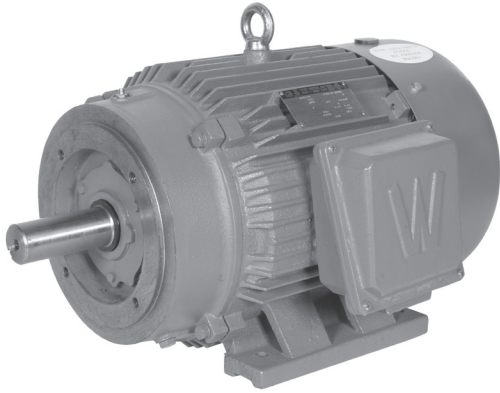
R Roller bearing on drive end for belted applications

When using any motor with a variable frequency drive, take precautions to eliminate or reduce shaft currents in order to prolong bearing life.



WORLDWIDE GENERAL PURPOSE MOTORS PREMIUM EFFICIENCY / HIGH EFFICIENCY

TEFC Enclosure ▪ C-Face ▪ Rigid Base ▪ Factory F2 Mount
Three-Phase ▪ 208-230/460 Volt



Product Overview

- 20-200 HP
- 1800 RPM
- 208-230/460 volt
- TEFC enclosure
- 1.15 service factor
- Class F insulation
- C-face - rigid base
- Factory F2 mount
- Premium efficiency
- Inverter ready, 4:1 CT / 10:1 VT
- Suitable for 50 hz operation with 1.0 service factor (20-150 HP)
Please consult WorldWide Electric for 200 HP and above
- Dimensions on page 93-94

HP	RPM	Voltage	Frame	Model Number	FL Amps (A)	FL Eff. (%)	Approx. Wt. (lbs.)	Notes
20	1800	208-230/460	256TC	PEWWE20-18-256TC-F2	24.1	93.0	390	
25	1800	208-230/460	284TC	PEWWE25-18-284TC-F2	29.2	93.6	410	
30	1800	208-230/460	286TC	PEWWE30-18-286TC-F2	34.7	93.6	450	
40	1800	208-230/460	324TC	PEWWE40-18-324TC-F2	46.5	94.1	617	
50	1800	208-230/460	326TC	PEWWE50-18-326TC-F2	57.1	94.5	675	
60	1800	208-230/460	364TC	PEWWE60-18-364TC-F2	69.9	95.0	827	
75	1800	208-230/460	365TC	PEWWE75-18-365TC-F2	84.1	95.4	904	
100	1800	208-230/460	405TC	PEWWE100-18-405TC-F2	113	95.4	1213	
	1800	208-230/460	405TSC	PEWWE100-18-405TSC-F2	113	95.4	1213	
125	1800	208-230/460	444TC	PEWWE125-18-444TC-F2	137	95.4	1455	
	1800	208-230/460	444TSC	PEWWE125-18-444TSC-F2	137	95.4	1455	
150	1800	208-230/460	445TC	PEWWE150-18-445TC-F2	168	95.8	1632	
	1800	208-230/460	445TSC	PEWWE150-18-445TSC-F2	168	95.8	1632	
200	1800	208-230/460	445/7TC	PEWWE200-18-445/7TC-F2	228.0	96.2	2051	

WORLDWIDE
GENERAL PURPOSE

R Roller bearing on drive end for belted applications

When using any motor with a variable frequency drive, take precautions to eliminate or reduce shaft currents in order to prolong bearing life.

